

Piano

# *Подними меня, Спаситель* Инструментовка И. Чобану

*Andante, con anima*

Measures 1-5 of the piano score. The key signature is one flat (B-flat). The time signature is common time (C). The music is in a grand staff. The right hand features a melodic line with a trill in measure 3, marked *tr*. The left hand provides a harmonic accompaniment with sustained notes and a trill in measure 1, also marked *tr*.

Measures 6-9 of the piano score. Measure 6 is marked with a box containing the number 1. The right hand continues the melodic line with various intervals and rests. The left hand maintains the accompaniment with moving bass lines and sustained chords.

Measures 10-15 of the piano score. Measure 10 is marked with a box containing the number 2. The right hand features a series of chords and intervals, with a trill in measure 11. The left hand continues the accompaniment with sustained notes and moving bass lines.

Measures 16-19 of the piano score. Measure 16 is marked with a box containing the number 3. The right hand features a series of chords and intervals, with a trill in measure 17. The left hand continues the accompaniment with sustained notes and moving bass lines.

Measures 20-23 of the piano score. Measure 20 is marked with a box containing the number 4. The right hand features a series of chords and intervals, with a trill in measure 21. The left hand continues the accompaniment with sustained notes and moving bass lines.

V.S.

24

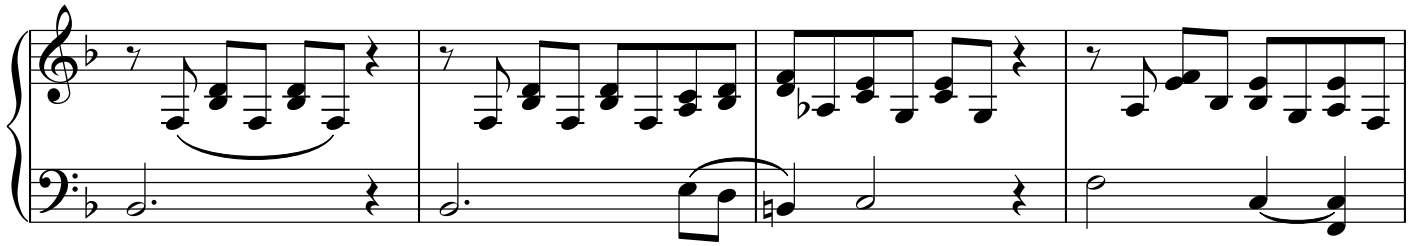
28

33 solo 5

38

42 6 7

53



8

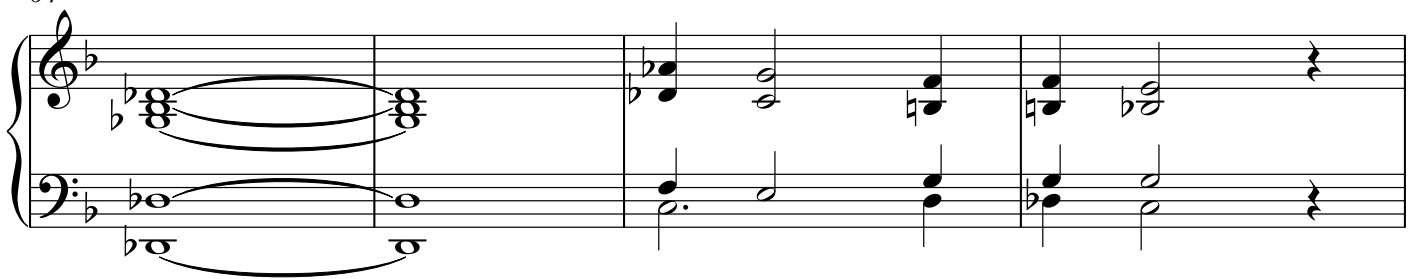
57



61

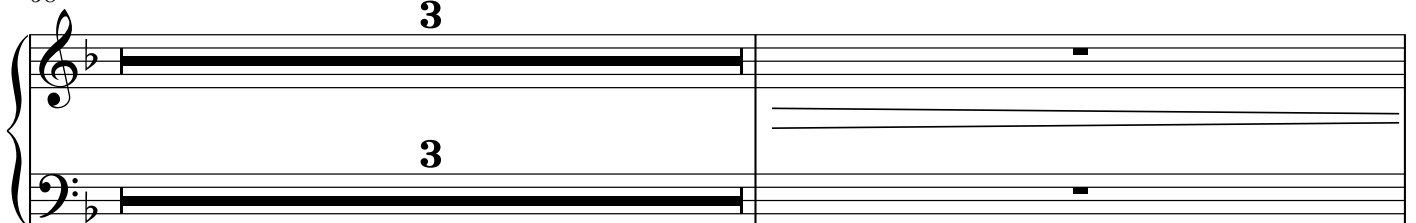


64



9

68



72 **10**

79 **11**

This image shows two systems of a musical score for piano. System 10 (measures 72-78) features a treble and bass staff. The treble staff has a key signature of one flat (B-flat) and a common time signature. It contains a series of chords and single notes, with a crescendo hairpin leading to a fortissimo (ff) dynamic in the final measure. The bass staff has a key signature of two flats (B-flat and E-flat) and a common time signature. It contains a series of chords and single notes, with a crescendo hairpin leading to a fortissimo (ff) dynamic in the final measure. System 11 (measures 79-85) also features a treble and bass staff. The treble staff has a key signature of one flat (B-flat) and a common time signature. It contains a series of chords and single notes, with a crescendo hairpin leading to a fortissimo (ff) dynamic in the final measure. The bass staff has a key signature of two flats (B-flat and E-flat) and a common time signature. It contains a series of chords and single notes, with a crescendo hairpin leading to a fortissimo (ff) dynamic in the final measure.